

1º JORNADA TÉCNICA DE BIBLIOTECAS  
DE CIENCIAS DE LA SALUD EN EL SIGLO XXI:  
ELECTRÓNICAS, DIGITALES, VIRTUALES E  
HÍBRIDAS. Grupo de Ciencias de la Salud- SEDIC

---

26 de Marzo de 2007  
Hospital Clínico San Carlos  
Madrid

Bases de datos personalizadas: la  
experiencia con Ovid

Ángeles Flores

---

The Lilly logo is written in a red, cursive script font.

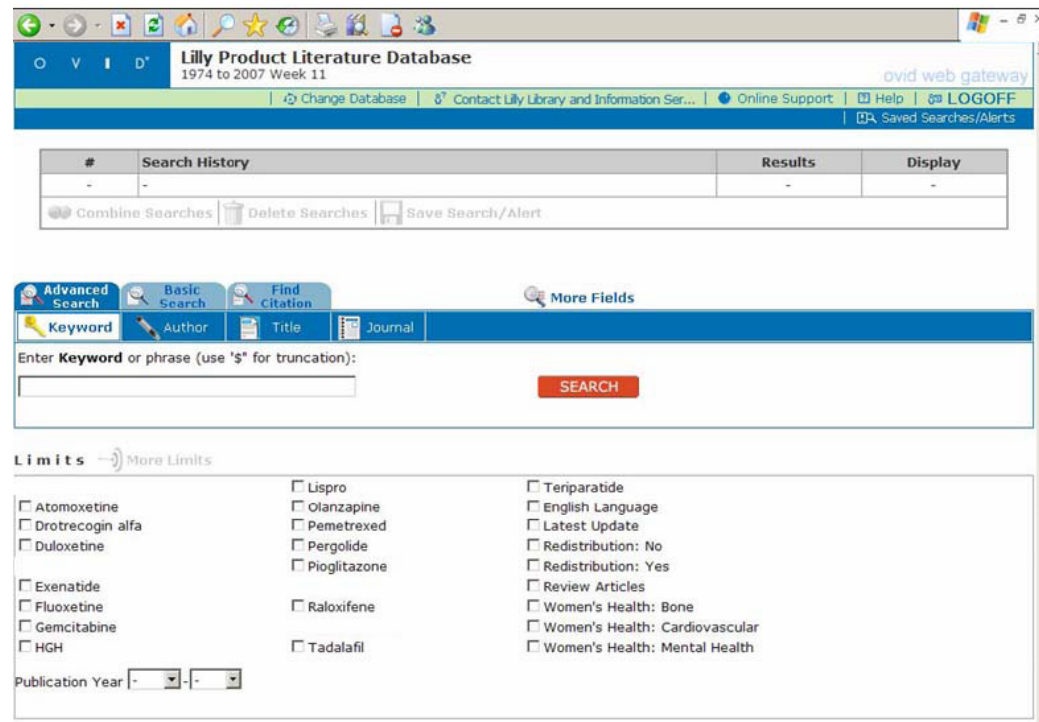
Answers That Matter.

---

# Bases de datos de literatura de medicamentos (PLD)

## ELIL

- Bibliográfica
- Medicamentos Lilly
- EMBASE, BIOSIS Previews, Current Contents, PsycINFO, MEDLINE, and PreMedline
- Referencias con abstract y links al texto completo



# Ventajas generales

---

Seguimiento de la literatura médica en las áreas de investigación de la compañía

- Dpto. Médico, Registros, Marketing

Universo de contenidos limitado al interés del usuario

Coste en función del contenido accesible

Copyright

# Ventajas frente a sistemas de volcado

---

Hosting y acceso vía web

Facilidades de búsqueda

- usuarios familiarizados con Ovid
- límites integrados
- configuración de alertas

Coste

- software para descarga

Manipulación de los registros

- Buscar, importar...

Instalar gestor de referencias en PCs

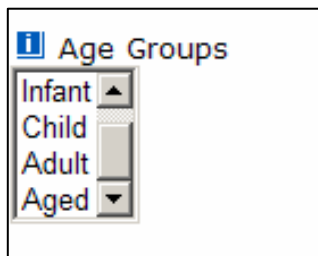
- Permisos, mantenimiento...

Añadir Links (DOI no disponible)

Entrenamiento

Posibilidad de descargar a gestor de referencias

# Facilidades de búsqueda: límites



Age Group	Database	Limit Syntax
<b>Infant (birth to 23 months) only</b>		
	Biosis Syntax (2003 to present):	limit 1 to (infant or newborn).or.
	Current Contents Syntax:	(infant\$ or infancy or baby or babe or newborn or toddler or preschool).kp.
	Embase Syntax:	limit 1 to (infant <to one year>).sh.
	Medline Syntax:	limit 1 to (all infant <birth to 23 months>).sh.
	PreMedline Syntax:	(infant\$ or infancy or baby or babe or newborn or toddler or preschool).sh.
	PsycInfo Syntax:	limit 1 to (120 neonatal <birth to age 1 mo> or 140 infancy <age 2 to 23 mo>).po.
<b>Child (0 to 18 years)</b>		
	Biosis Syntax (2003 to present):	limit 1 to (adolescent or child or infant or preadolescent or preschool).or.
	Current Contents Syntax:	(child or children or adolescent\$ or young or teen or teenager).kp.
	Embase Syntax:	limit 1 to (infant <to one year> or child <unspecified age> or preschool child <1 to 6 years> or school child <7 to 12 years> or adolescent <13 to 17 years>).sh.
	Medline Syntax:	limit 1 to (all child <0 to 18 years>).sh.
	PreMedline Syntax:	(child or children or adolescent\$ or young or teen or teenager).sh.
	PsycInfo Syntax:	limit 1 to (100 childhood <birth to age 12 yrs> or 200 adolescence <age 13 to 17 years>).po.



Species	Database	Limit Syntax
<b>Animal</b>		
	Biosis Syntax:	limit 1 to animal.tn. or animals.tn.
	Current Contents Syntax:	animals\$1.kp.
	Embase Syntax:	nonhuman.hw
	Medline Syntax:	limit 1 to animal.sh. or animals.sh.
	PreMedline Syntax:	animals\$1.sh.
	PsycInfo Syntax:	limit 1 to animal.sh.
<b>Human</b>		
	Biosis Syntax:	limit 1 to human.tn or humans.tn.
	Current Contents Syntax:	humans\$1.kp.
	Embase Syntax:	(limit 1 to human.sh.) or (human.hw.)
	Medline Syntax:	limit 1 to humans.sh. or exp humans/
	PreMedline Syntax:	humans\$1.sh.
	PsycInfo Syntax:	limit 1 to human.sh or (human\$.sh)

# Facilidades de búsqueda: límites

○ V I D\*
**Lilly Product Literature Database**  
 1974 to 2007 Week 11
 ovid web gateway

Change Database | Contact Lilly Library and Information Ser... | Online Support | Help | LOGOFF

Saved Searches/Alerts

#	Search History	Results	Display
1	depression.ti.	5218	DISPLAY
2	limit 1 to (human and women's health: mental health)	120	DISPLAY

Combine Searches | Delete Searches | Save Search/Alert

- Women's Health: Bone
- Women's Health: Cardiovascular
- Women's Health: Mental Health

2. Schmidt PJ; Rubinow DR. **Reproductive ageing, sex steroids and depression.** [Review] [117 refs] [Journal Article, Research Support, N.I.H., Extramural, Review] *Journal of the British Menopause Society.* 12(4):178-85, 2006 Dec.  
Find Similar | Find Citing Articles

Abstract  
Complete Reference

---

3. Morgan, Melinda L.; Cook, Ian A.; Rapkin, Andrea J.; Leuchter, Andrew F.. **Neurophysiologic changes during estrogen augmentation in perimenopausal depression** [Article] *Maturitas.* 56(1). JAN 20 2007. 54-60.  
 Online & some print held by a Lilly Library  
Find Similar | Find Citing Articles

Abstract  
Complete Reference  
Full Text

---

4. Ozturk O; Eraslan D; Mete HE; Ozener S. **The risk factors and symptomatology of perimenopausal depression.** [Journal Article] *Maturitas.* 55(2):180-6, 2006 Sep 20.  
 Online & some print held by a Lilly Library  
Find Similar | Find Citing Articles

Abstract  
Complete Reference  
Full Text

# Derechos de distribución y coste

 **Lilly Product Literature Database**  
1974 to 2007 Week 11 ovid web gateway

[Change Database](#) | [Contact Lilly Library and Information Ser...](#) | [Online Support](#) | [Help](#) | [LOGOFF](#)

[Saved Searches/Alerts](#)

#	Search History	Results	Display
1	depression.ti.	5218	DISPLAY
2	limit 1 to (human and women's health: mental health)	120	DISPLAY
3	<b>limit 2 to redistribution: yes</b>	<b>45</b>	DISPLAY

[Combine Searches](#) | [Delete Searches](#) | [Save Search/Alert](#)

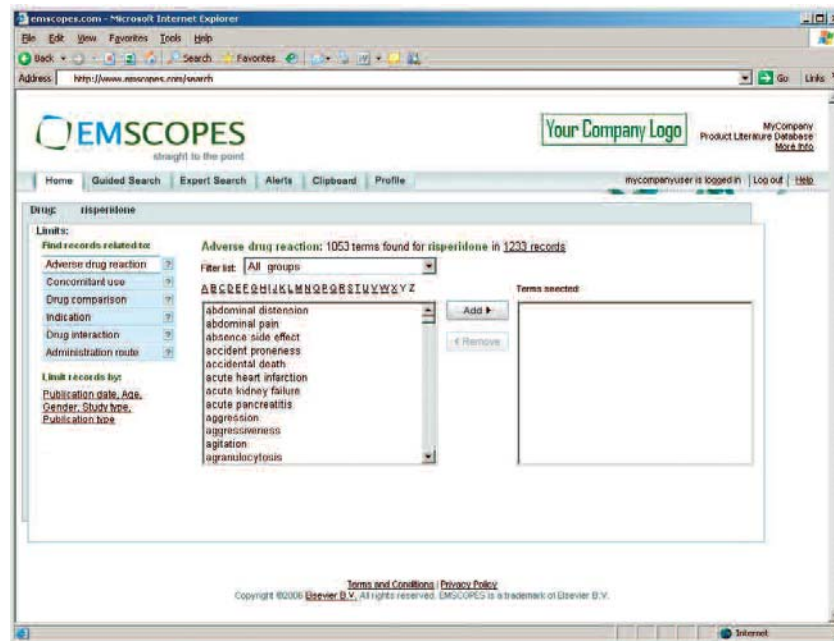
- Redistribution: No
- Redistribution: Yes

## COSTE

Hosting

Coste inicial mayor, 2 años

# Otros proveedores



<http://www.info.emscopes.com/brochure.pdf>

# Inconvenientes

---

Búsqueda por descriptores

hw: Heading Word

sh: Subject Heading

# Reflexiones

---

Soluciones para centros especializados

Papel del bibliotecario-documentalista

Pongámoselo fácil al usuario

Paguemos sólo por lo que necesitamos